



W40-0



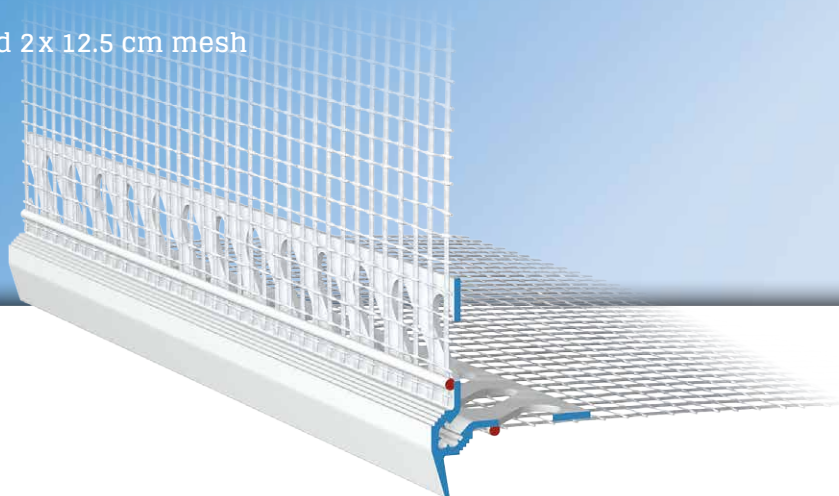
# APU<sup>®</sup>

PROFILES FOR COMPOUND HEAT INSULATION SYSTEMS

## Drip bead

# DROP-TEX-ZERO

With drip edge and 2 x 12.5 cm mesh



The **APU drip bead DROP-TEX-ZERO** is used horizontally in compound heat insulation systems for recessed building elements, such as window and door jambs. The profile contour with its visible drip edge offers a reliable solution in respect of downward guidance of water.

The profile has two punched plaster bars. Welded onto every bar is a fabric strip. Each bar has a fabric overhang on one side of 10cm in the lengthways direction. To improve plaster take-up, the surfaces of the plaster edges are grooved.



## Design

	ITEM NO.	LENGTH	PACKAGING UNIT	WEIGHT (per PU)
--	----------	--------	----------------	-----------------

### DROP-TEX-ZERO drip bead

W40-0 With drip edge and 2 x 12.5 cm mesh	W40-0-2000	2.0 m	25 bars = 50 m	7.1 kg
--	------------	-------	----------------	--------

## Features

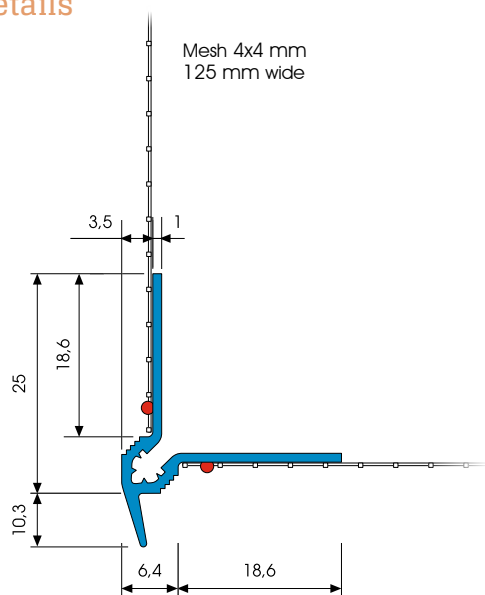
DROP-TEX-ZERO DRIP BEAD	
Material	<ul style="list-style-type: none"> <li>■ Rigid PVC manufactured under DIN-16941</li> </ul>
Mesh	<ul style="list-style-type: none"> <li>■ Min. 160 g/m<sup>2</sup> approved for compound heat insulation systems</li> <li>■ 2 x 12.5 cm wide – MW 4 x 4 mm</li> <li>■ Ultrasonic welded</li> </ul>
Accessories	<ul style="list-style-type: none"> <li>■ Z13-0000 Plug connectors (1 bag)</li> <li>■ Z18-0-1010i Internal corners (2 pieces)</li> <li>■ Z18-0-1010a External corners (4 pieces)</li> </ul>

## Important information

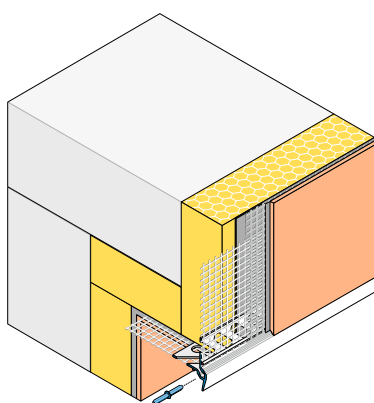
Storage	Always store profiles laid down in a dry place.
Other applications	Any applications not clearly described in the documents may be implemented only after consultation with the plaster or ETICS manufacturer.

For information on materials, areas of use, tests and correct application, please refer to our 'General Advice and Information'

## Details



Sectional drawing in mm



Application drawing