



W56



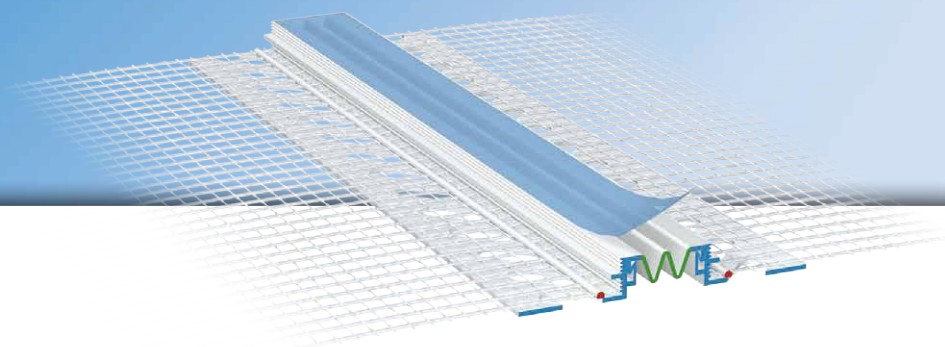
# APU<sup>®</sup>

PROFILES FOR COMPOUND HEAT INSULATION SYSTEMS

## Expansion joint profile

# MOV I

With TPE expansion joint tape and 12.5 cm mesh



The **APU expansion joint profile MOV I** is used in compound heat insulation systems at building joints. For the flush formation of a clean plaster edge, the profile can be fitted both in flat surfaces and inner corners.

The profile is made up of 2 plastic profiles, to each of which a strip of mesh is welded. Between the two profiles there is a soft expansion joint tape made of flexible TPE, which can absorb the movements. Thanks to it being possible for the profiles to move, they can be fitted overlapping in areas where elements abut. The abutting joint must then have appropriate PUR sealing strip fitted behind it and thus be sealed off. After completion of the plastering work and removal of the protective film, a clean plaster division is produced.



W56



## Design

	ITEM NO.	LENGTH	PACKAGING UNIT	WEIGHT (per PU)
--	----------	--------	----------------	-----------------

### MOVI expansion joint profile

W56	W56-2000	2.0 m	25 bars = 50 m	10.0 kg
-----	----------	-------	----------------	---------

## Features

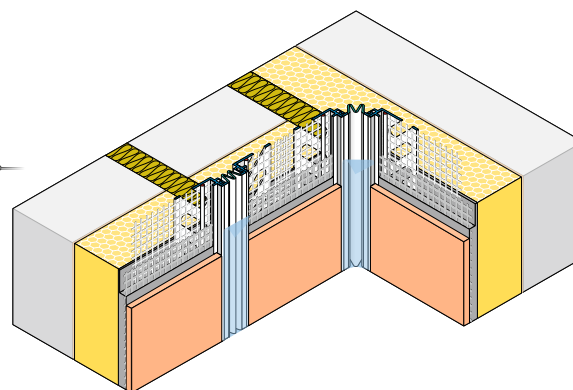
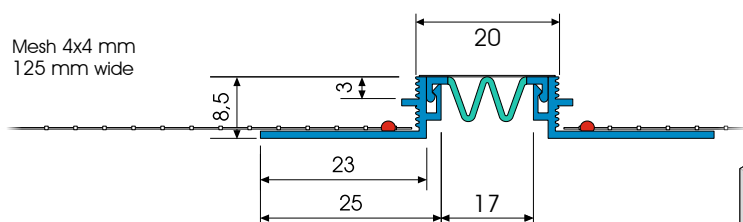
	MOVI EXPANSION JOINT PROFILE
Material	<ul style="list-style-type: none"> <li>■ Rigid PVC manufactured under DIN-16941</li> <li>■ TPE manufactured under DIN-16941</li> </ul>
Mesh	<ul style="list-style-type: none"> <li>■ Min. 160 g/m<sup>2</sup> approved for compound heat insulation systems</li> <li>■ 2 x 12.5 cm wide – MW 4x4 mm</li> <li>■ Ultrasonic welded</li> </ul>
Movement absorbed on surface area	■ c. 15 mm (stretchable by c. 10 mm, compressible by c. 5 mm)
Movement absorbed in internal corner	■ c. 15 mm (stretchable by c. 10 mm, compressible by c. 5 mm)

## Important information

Storage	Always store profiles laid down in a dry place.
Other applications	Any applications not clearly described in the documents may be implemented only after consultation with the plaster or ETICS manufacturer.
Abutting joint seal	The abutting joints must in addition have appropriate PUR sealing strip fitted behind them and be sealed off.

For information on materials, areas of use, tests and correct application, please refer to our 'General Advice and Information'

## Details



Sectional drawing in mm

Application drawing