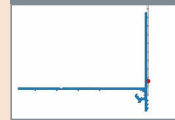




W66 - 1

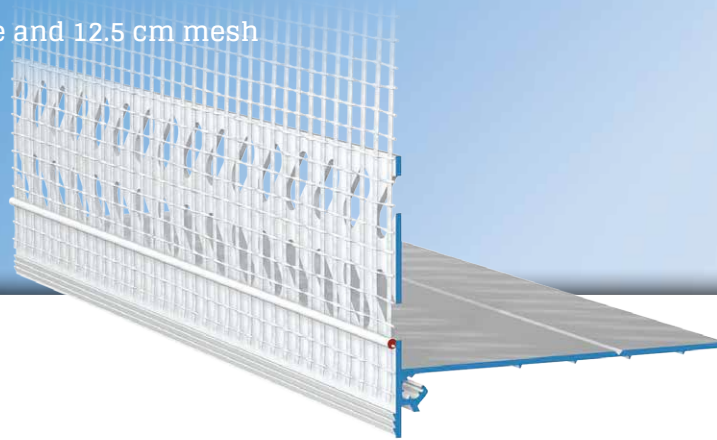
**APU**[®]

PROFILES FOR COMPOUND HEAT INSULATION SYSTEMS

Base edge profile

SOKA-TEX-UNO

With straight drip edge and 12.5 cm mesh



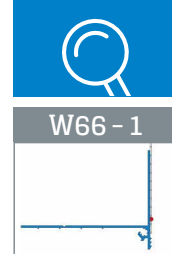
The **APU base edge profile SOKA-TEX-UNO** is used in compound heat insulation systems as the bottom termination of the wall insulation.

Dependent on insulating material thickness, the base edge profile is pushed in in flexible ways between perimeter insulation and wall insulation. Where insulating material thicknesses differ, the base edge profile can in each instance be extended by 50 mm using the extension for W66 (Z23). The base edge profile forms an exact plaster edge with drip nose.

The base edge profile SOKA-TEX-UNO, with its straight contour, ensures that water is accurately guided away. There is a fabric window reveal bead welded onto the profile. Each bar has a fabric overhang on one side of 10cm in the lengthways direction.

The included plug connectors (Z13), butt connectors (Z61) and inner and outer corners (Z18 - 1) enable the profiles to be joined and fitted very precisely.

What is created after completion of the plastering work is a clean termination of the plaster.



Design

	ITEM NO.	LENGTH	PACKAGING UNIT	WEIGHT (per PU)
--	----------	--------	----------------	-----------------

SOKA-TEX-UNO base edge profile

W66 - 1				
With straight drip edge and 12.5 cm mesh	W66-1-2000	2.0 m	25 bars = 50 m	10.3 kg

Features

	SOKA-TEX-UNO BASE EDGE PROFILE
Material	<ul style="list-style-type: none"> ■ Rigid PVC manufactured under DIN 16941
Mesh	<ul style="list-style-type: none"> ■ Min. 160 g/m² approved for compound heat insulation systems ■ 12.5 cm wide – MW 4x4 mm ■ Ultrasonic welded
Accessories	<ul style="list-style-type: none"> ■ Z13-0000 Plug connectors (1 bag) ■ Z18-1-1010i Internal corners (2 pieces) ■ Z18-1-1010a External corners (4 pieces)
Optional accessories	<p>For installing the perimeter insulation later:</p> <ul style="list-style-type: none"> ■ Z16-0060 Mounting bracket 60 mm ■ Z16-0120 Mounting bracket 120 mm ■ Z20-2005 Mounting rail 50 mm ■ Z20-2010 Mounting rail 100 mm ■ Z20-2016 Mounting rail 160 mm <p>For installation without perimeter insulation (insulation material thickness up to 150 mm):</p> <ul style="list-style-type: none"> ■ Z20-2005 Mounting rail 50 mm ■ Z20-2010 Mounting rail 100 mm <p>For insulating material extension:</p> <ul style="list-style-type: none"> ■ Z23-2000 extension for W66 2.0 m

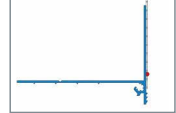
Important information

Other applications	Any applications not clearly described in the documents may be implemented only after consultation with the plaster or ETICS manufacturer.
Perimeter insulation	<p>Where the insulating material thickness is 150 mm or more, perimeter insulation is required.</p> <p>For retrospective installation of perimeter insulation</p> <p>▶ see Z16 and Z20 product documents</p> <p>For installation with no perimeter insulation (where the insulating material thickness is 150 mm or more perimeter insulation is required)</p> <p>▶ see Z20 product documents</p>

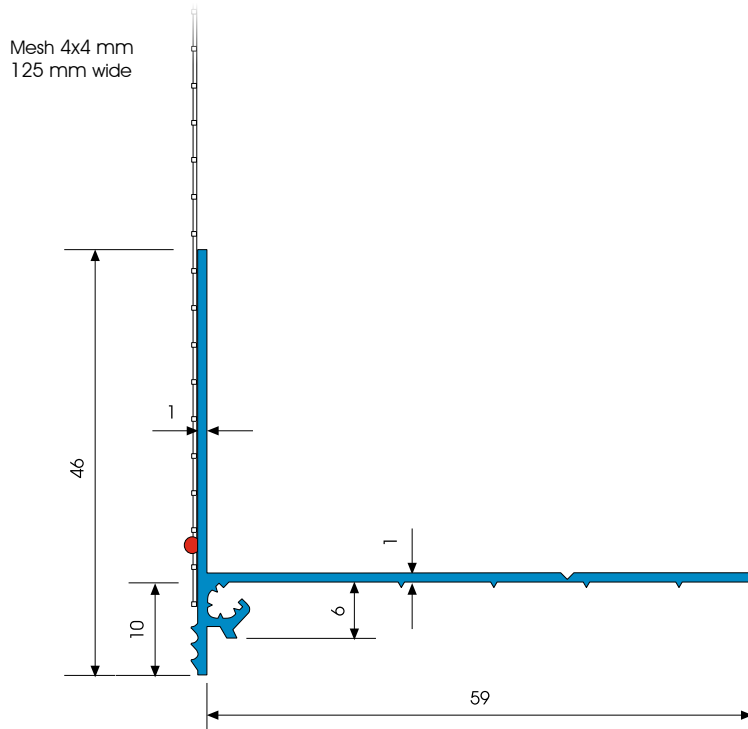
For information on materials, areas of use, tests and correct application, please refer to our 'General Advice and Information'



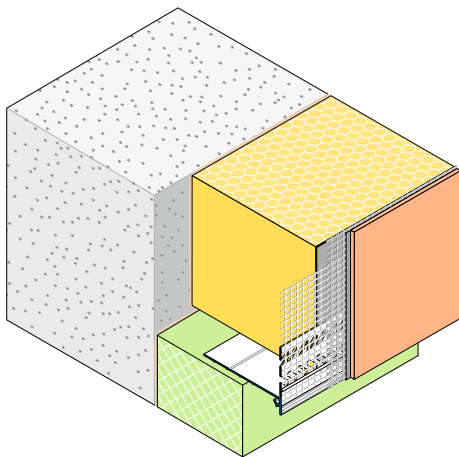
W66 - 1



Details



Sectional drawing in mm



Application drawing